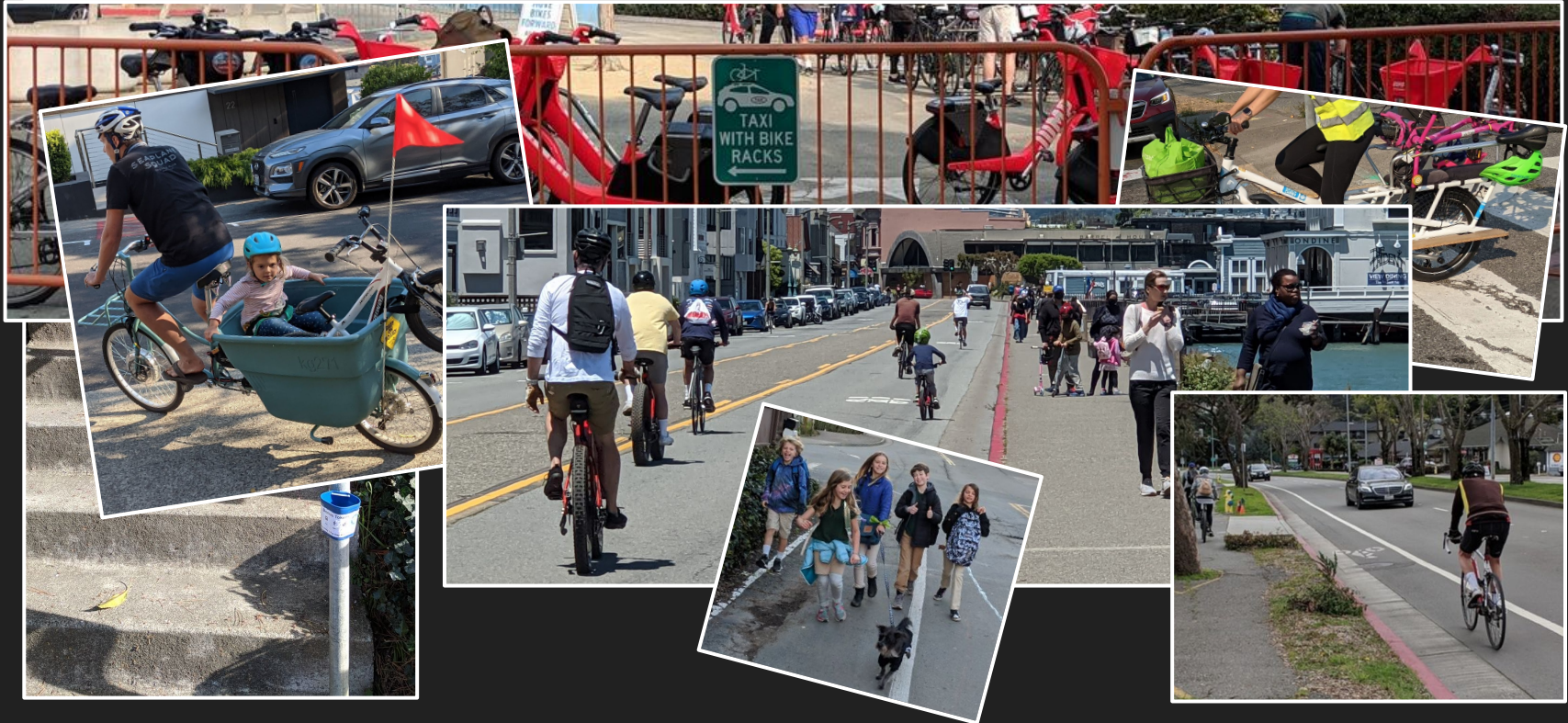


Sausalito Pathways

Mobility for Our Future

Many Different Ways to Get Around



Bicycle Highway: Recreation - Fitness - Commute



Mostly Bikes | Fast Pace | Intentional | Frequent | Few Stops | Cohesive | Peak Times

Greenway: Recreation - Family - School - Fitness - Tour



Foot & Wheels | Casual Pace | Explore | Occasional | More Stops | Cohesive | Peak Times

Waterfront Esplanade: Recreation - Family - Fitness - Tour



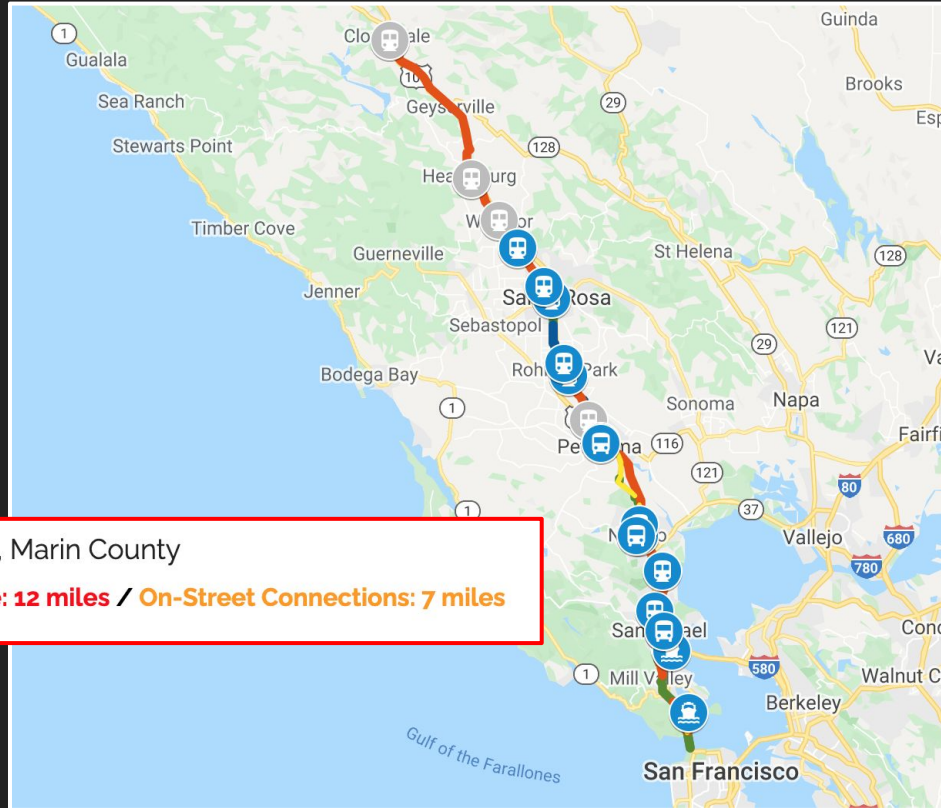
Mostly Foot | Slow Pace | Meander | Occasional | Many Stops | Incohesive | All Times

Local Connections: Residents



Foot & Wheels | Many Purposes | Incohesive | Complex Wayfinding

North Bay's Greenway



North-South Greenway Status, Marin County

Complete: 11 miles / **Incomplete: 12 miles** / **On-Street Connections: 7 miles**

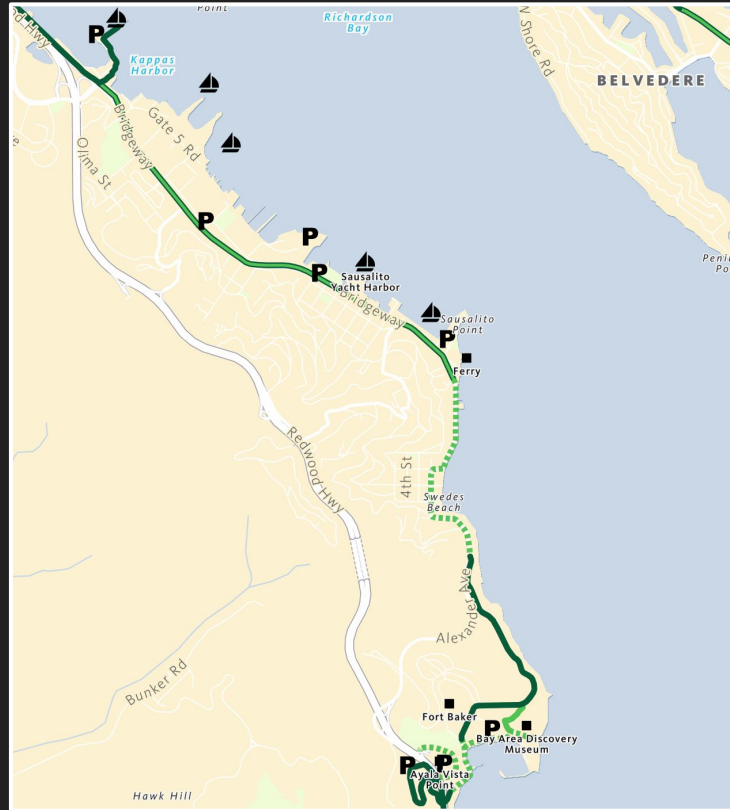
Sausalito's Greenway



SF Bay Trail



SF Bay Trail + Sausalito

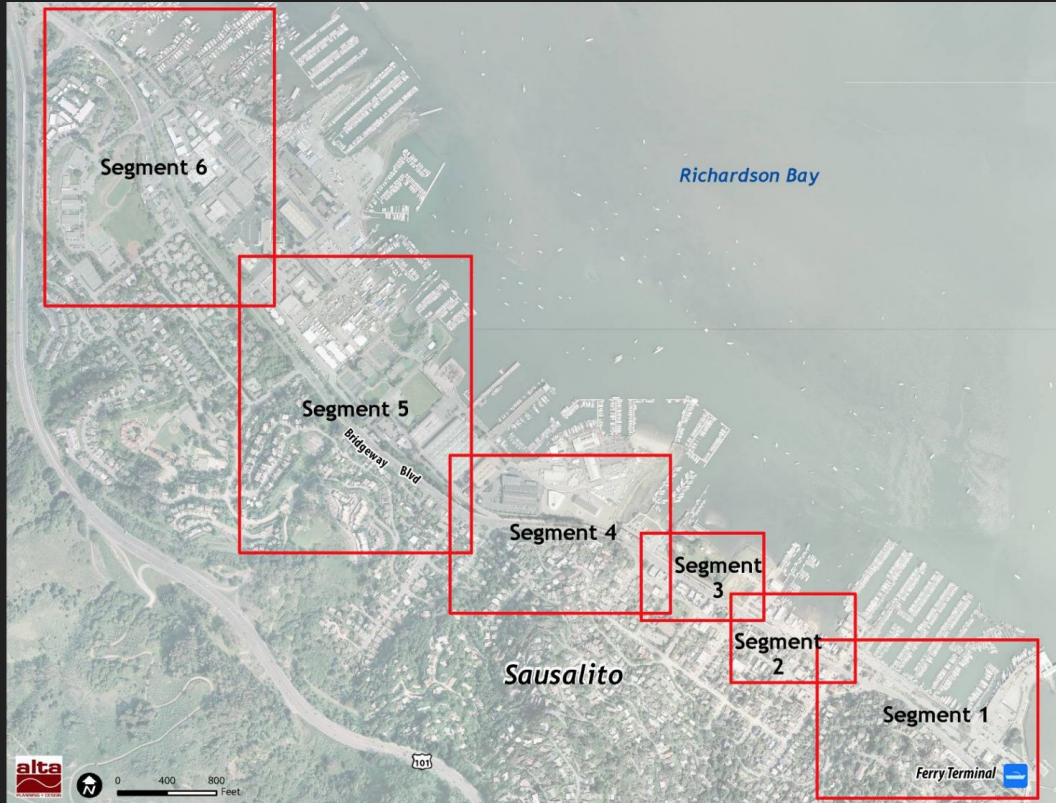


2011 Ferry Terminal to Gate 6 Feasibility Study

“examines design options for a bicycle and pedestrian connection between the Sausalito Ferry Landing and the Gate 6 Road and Bridgeway intersection. “

0% Complete (Dormant)

Greenway in Segments



Segments by Area

Segment 1 - Downtown

Ferry to Johnson

Segments 2 & 3 - Caledonia

Johnson to Napa

Segment 4 - Liberty Ship

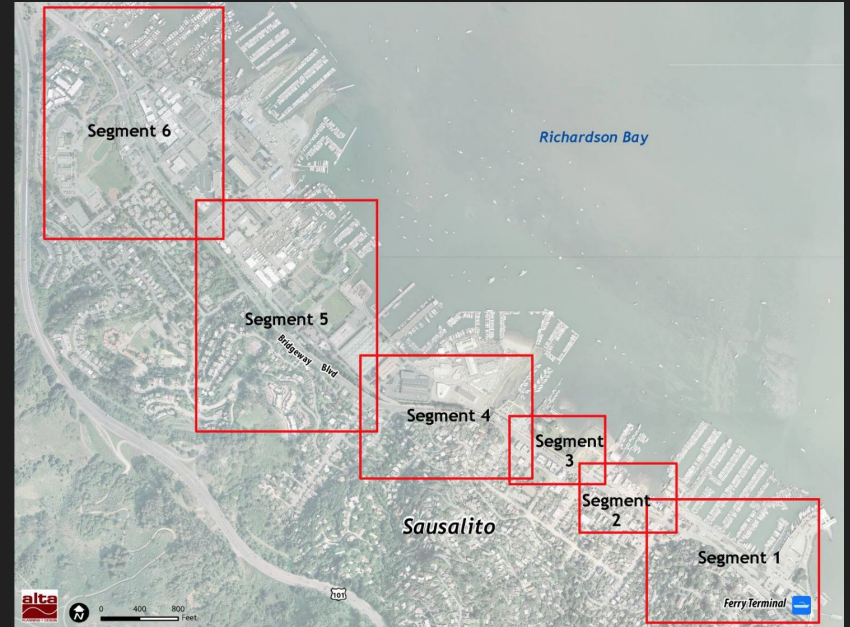
Napa to Liberty Ship

Segment 5 - Marinship

Liberty Ship to Harbor

Segment 6 - North

Harbor to Gate 6



Segments by Cost

Segment 1

\$\$ Right of Way (ROW) Acquisition

Segments 2 & 3

\$ Straightforward Path Construction

Segment 4

\$ Path Repaving

Segment 5

\$\$\$\$ Right of Way (ROW) Acquisition

Segment 6

\$\$ Path Construction crossing intersections

Table 7-12 Sausalito Path Cost Estimate

Segment	Total Cost
Segment 1	\$2,039,200 - \$2,180,100
Segment 2	\$378,600
Segment 3	\$417,200
Segment 4	\$147,700- \$184,900
Segment 5	\$6,437,700 - \$7,966,100
Segment 6	\$1,261,000
Project Total	\$10,681,400 - \$12,387,900

Things Have Changed Since Feasibility Study

- 2010 Estimates are Stale
- Bike Traffic Increased
- E-Bike Sales Increased
- Increased Student Use
- 2014 Protected Bikeways Act
- 2018 CalTrans Class IV Guide
- Climate Change Acceptance

7.9. Project Cost Estimate

The Sausalito Ferry Terminal to Gate 6 Road Path will cost approximately \$4.9 million. Table 7-12 presents the subtotal for the six project segments and the total cost of the project. Chapter 8 presents an implementation strategy for developing the path over a 15 year period.

Table 7-12 Sausalito Path Cost Estimate

Segment	Total Cost
Segment 1	\$2,039,200 - \$2,180,100
Segment 2	\$378,600
Segment 3	\$417,200
Segment 4	\$147,700- \$184,900
Segment 5	\$6,437,700 - \$7,966,100
Segment 6	\$1,261,000
Project Total	\$10,681,400 - \$12,387,900

\$5M or \$10M?

Implementation by 2025?

Sausalito's Bike & Ped Protected Pathway by 2025



Process for Success

- Separate segments into standalone projects
- Reduce Costs where possible
- Reduce controversy
- Avoid required environmental studies, where possible
- Pathways to Schools
- Pathways to Marin City
- Get shovel ready / grant ready
- Early community outreach
- Iterative approach / pilot projects where possible
- Collaborate with regional organizations
- Consider direct funding sources (Bonds)
- PBAC leads the charge with Sustainability and City Council Support

Where do we begin?

Segment 6 - Extend Sausalito-MV Path to Harbor Dr.



\$1.2M Cost Estimate (2010) for Harbor to Gate 6

- Includes completed Gate 6 Project
- No Right of Way Acquisition
- Already a designated pathway
- Removal of trees and existing path
- No environmental review?
- Minor light control modifications

Segment 6, Harbor Drive to Gate 6 Road

29-Sep-10

No.	Item Description	Estimated Quantity	Unit of Measure	Unit Cost	Item Total
1	Mobilization and Traffic Control	1	LS	\$84,900	\$84,900
2	Clearing and Grubbing, Tree Removal	1	LS	\$50,000	\$50,000
3	SWPPP & Erosion Control	1	LS	\$5,000	\$5,000
4	Remove Concrete, AC & other surfacing	41,786	SF	\$4	\$167,144
5	Utility Relocation/Allocation	1	LS	\$10,000	\$10,000
6	Remove Traffic Striping and Marking	1	LS	\$1,500	\$1,500
7	Bike Path	18,093	SF	\$8	\$144,744
8	ADA Ramp	11	EA	\$1,000	\$11,000
9	Curb and Gutter and AC Conforms	338	LF	\$50	\$16,900
10	Concrete Islands & Curb	1	EA	\$2,500	\$2,500
11	Minor Concrete (Sidewalk, Ramp)	18,274	SF	\$10	\$182,740
12	Pavement Stripes	3,079	LF	\$1	\$3,079
13	Pavement Markings	2,343	SF	\$3	\$7,029
14	Signal Modifications	1	LS	\$60,000	\$60,000
15	Path & Roadside Signs	1	LS	\$3,500	\$3,500
16	Wayfinding Signs	3	EA	\$500	\$1,500
17	Unsuitable Material	23	CY	\$300	\$6,900
18	Landscaping, Irrigation	8,729	SF	\$5	\$43,645
19	Lighting	33	EA	\$4,000	\$132,000

Subtotal Construction Cost	\$934,081
Contingency (20%)	\$186,816
Design, Permitting (15%)	\$140,112
Total Construction Cost	\$1,261,000

Getting Harbor to Gate 6 Completed

- PBAC recommends inclusion in 2022/23 Capital Improvements Project (CIP)
- City Council endorses the segment as a priority
- PBAC holds community outreach to mitigate concerns
- Environmental review and design estimates provided
- Funding found for environmental review and design
- Environmental review and design completed
- Project is shovel ready waiting for funding
- Regional advocates help find grants where possible
- Project is funded and completed
- Residents and visitors enjoy a Class I path for an extra half mile

2025

A Protected Walkway and Bikeway Through Sausalito